





MINI

The powerful space-saving workstation.

Built with the same durable motor system as our larger desks, the Mini desk's compact footprint allows it to fit in to the tightest of spaces. Available from stock in four frame colours and 18 décor combinations.

The home working and hot-desk solution.



MINI

PRODUCT DETAILS

FRAME

Guarantee

5yrs

Frame Width

950mm

Height Range (Inc. 25mm Top)

625 - 1285mm (± 5mm)

Stroke

660mm

Side Bracket Depth

540mm

Foot Depth

590mm

Max Even Load Capacity

120kg

Total Frame Weight

25kg

Operational Life

10,000 cycles at full rated load

Voltage

230V AC Input, 24V DC operation

Operational Speed

40mm per second

Standby Power

<0.3 W

Max Operational Power

300W

Programmable Min/Max Height

Yes

Duty Cycle

10% - 2mins on, 18mins off

Noise Level

<42 dB

Anti-Collision

Inbuilt overload protection

Inbuilt temperature protection

**High sensitivity upgrade available
(see page 184)**

Compliance

CE Conformity

Machine Directive 2006/42/EC

EMC Directive 2014/30EU

Low Voltage Directive 2014/35/EC

REACH, WEEE and RoHS 3 2015/863

EN 527-1:2011 Type A, EN 527-2:2016

ISO 21016

DESKTOP

Guarantee

5yrs

Material

25mm MFC

Edging

2mm ABS

Compliance

FSC Certified

Stock sizes (mm)

1000 x 600mm

PACKAGING

Frame

Size - 840 x 380 x 120mm x 1

1200 x 170 x 130mm x 1

Weight - 27kg (total)

Quantity - 2

Top

Size - 1100 x 700 x 30mm

Weight - 12kg

Quantity - 1

INSTALLATION

Build Time (per unit)

20 - 30 mins

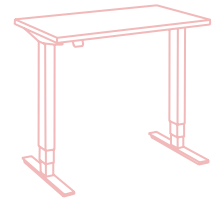
Suitable for self-assembly

Yes

SAMPLES

Order free desktop décor samples at

www.lavorodesign.com/samples



The Mini is a heavy-duty dual motor desk, designed to fit perfectly into situations where space is at a premium. Using the same robust motors and electronic system as our flagship Advance desk, Mini is a real workhorse.

This desk has an impressive height range, from 625mm (perfect for wheelchair accessibility) to 1285mm (designed for users up to 7ft in height). It also features a single piece rigid cross beam, making it both easy to build, and one of the toughest, most elegant, compact desks on the market.

FEATURES



Height Range: 625 - 1285mm



5 Year Guarantee



Speed: 40mm Per Second



Next Day Delivery



Load Capacity: 120kg



Dual Motor Desk

FRAME OPTIONS



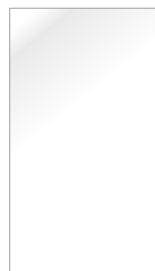
Black
RAL 9005



Anthracite
Metallic



Silver
RAL 9006



White
RAL 9016

SUSTAINABILITY



MINI

BLACK FRAMES

RAL 9005



BLACK
Black Frame

1000x600: [BMIN/1000600BLA](#)



GRAPHITE
Black Frame

1000x600: [BMIN/1000600GRA](#)



GREY
Black Frame

1000x600: [BMIN/1000600GRY](#)



WHITE
Black Frame

1000x600: [BMIN/1000600WHI](#)



WENGE
Black Frame

1000x600: [BMIN/1000600WEN](#)



ANTHRACITE SHERMAN OAK
Black Frame

1000x600: [BMIN/1000600ASO](#)



NATURAL DIJON WALNUT
Black Frame

1000x600: [BMIN/1000600NDW](#)



TIMBER
Black Frame

1000x600: [BMIN/1000600TIM](#)



GREY NEBRASKA OAK
Black Frame

1000x600: [BMIN/1000600GNO](#)



BEECH
Black Frame

1000x600: [BMIN/1000600BEE](#)



OAK
Black Frame

1000x600: [BMIN/1000600OAK](#)



MAPLE
Black Frame

1000x600: [BMIN/1000600MAP](#)



CASCINA PINE
Black Frame

1000x600: [BMIN/1000600CAS](#)



BLACK PLY EDGE
Black Frame

1000x600: [BMIN/1000600BLA/PE](#)



GRAPHITE PLY EDGE
Black Frame

1000x600: [BMIN/1000600GRA/PE](#)



WHITE PLY EDGE
Black Frame

1000x600: [BMIN/1000600WHI/PE](#)



CONCRETE
Black Frame

1000x600: [BMIN/1000600CON](#)



FERRO BRONZE
Black Frame

1000x600: [BMIN/1000600FER](#)

SEE PAGE 194
FOR DESKTOP
DÉCOR DETAILS

MINI

ANTHRACITE FRAMES

METALLIC



BLACK
Anthracite Frame

1000x600: [AMIN/1000600BLA](#)



GRAPHITE
Anthracite Frame

1000x600: [AMIN/1000600GRA](#)



GREY
Anthracite Frame

1000x600: [AMIN/1000600GRY](#)



WHITE
Anthracite Frame

1000x600: [AMIN/1000600WHI](#)



WENGE
Anthracite Frame

1000x600: [AMIN/1000600WEN](#)



ANTHRACITE SHERMAN OAK
Anthracite Frame

1000x600: [AMIN/1000600ASO](#)



NATURAL DIJON WALNUT
Anthracite Frame

1000x600: [AMIN/1000600NDW](#)



TIMBER
Anthracite Frame

1000x600: [AMIN/1000600TIM](#)



GREY NEBRASKA OAK
Anthracite Frame
1000x600: [AMIN/1000600GNO](#)



BEECH
Anthracite Frame
1000x600: [AMIN/1000600BEE](#)



OAK
Anthracite Frame
1000x600: [AMIN/1000600OAK](#)



MAPLE
Anthracite Frame
1000x600: [AMIN/1000600MAP](#)



CASCINA PINE
Anthracite Frame
1000x600: [AMIN/1000600CAS](#)



BLACK PLY EDGE
Anthracite Frame
1000x600: [AMIN/1000600BLA/PE](#)



GRAPHITE PLY EDGE
Anthracite Frame
1000x600: [AMIN/1000600GRA/PE](#)



WHITE PLY EDGE
Anthracite Frame
1000x600: [AMIN/1000600WHI/PE](#)



CONCRETE
Anthracite Frame
1000x600: [AMIN/1000600CON](#)



FERRO BRONZE
Anthracite Frame
1000x600: [AMIN/1000600FER](#)

SEE PAGE 194
FOR FRAME
COLOUR DETAILS

MINI

SILVER FRAMES

RAL 9006



BLACK
Silver Frame

1000x600: [SMIN/1000600BLA](#)



GRAPHITE
Silver Frame

1000x600: [SMIN/1000600GRA](#)



GREY
Silver Frame

1000x600: [SMIN/1000600GRY](#)



WHITE
Silver Frame

1000x600: [SMIN/1000600WHI](#)



WENGE
Silver Frame

1000x600: [SMIN/1000600WEN](#)



ANTHRACITE SHERMAN OAK
Silver Frame

1000x600: [SMIN/1000600ASO](#)



NATURAL DIJON WALNUT
Silver Frame

1000x600: [SMIN/1000600NDW](#)



TIMBER
Silver Frame

1000x600: [SMIN/1000600TIM](#)



GREY NEBRASKA OAK
Silver Frame
1000x600: [SMIN/1000600GNO](#)



BEECH
Silver Frame
1000x600: [SMIN/1000600BEE](#)



OAK
Silver Frame
1000x600: [SMIN/1000600OAK](#)



MAPLE
Silver Frame
1000x600: [SMIN/1000600MAP](#)



CASCINA PINE
Silver Frame
1000x600: [SMIN/1000600CAS](#)



BLACK PLY EDGE
Silver Frame
1000x600: [SMIN/1000600BLA/PE](#)



GRAPHITE PLY EDGE
Silver Frame
1000x600: [SMIN/1000600GRA/PE](#)



WHITE PLY EDGE
Silver Frame
1000x600: [SMIN/1000600WHI/PE](#)



CONCRETE
Silver Frame
1000x600: [SMIN/1000600CON](#)



FERRO BRONZE
Silver Frame
1000x600: [SMIN/1000600FER](#)

SEE PAGE 187
FOR POWER
AND CHARGING

MINI

WHITE FRAMES

RAL 9016



BLACK
White Frame

1000x600: [WMIN/1000600BLA](#)



GRAPHITE
White Frame

1000x600: [WMIN/1000600GRA](#)



GREY
White Frame

1000x600: [WMIN/1000600GRY](#)



WHITE
White Frame

1000x600: [WMIN/1000600WHI](#)



WENGE
White Frame

1000x600: [WMIN/1000600WEN](#)



ANTHRACITE SHERMAN OAK
White Frame

1000x600: [WMIN/1000600ASO](#)



NATURAL DIJON WALNUT
White Frame

1000x600: [WMIN/1000600NDW](#)



TIMBER
White Frame

1000x600: [WMIN/1000600TIM](#)



GREY NEBRASKA OAK

White Frame

1000x600: [WMIN/1000600GNO](#)



BEECH

White Frame

1000x600: [WMIN/1000600BEE](#)



OAK

White Frame

1000x600: [WMIN/1000600OAK](#)



MAPLE

White Frame

1000x600: [WMIN/1000600MAP](#)



CASCINA PINE

White Frame

1000x600: [WMIN/1000600CAS](#)



BLACK PLY EDGE

White Frame

1000x600: [WMIN/1000600BLA/PE](#)



GRAPHITE PLY EDGE

White Frame

1000x600: [WMIN/1000600GRA/PE](#)



WHITE PLY EDGE

White Frame

1000x600: [WMIN/1000600WHI/PE](#)



CONCRETE

White Frame

1000x600: [WMIN/1000600CON](#)



FERRO BRONZE

White Frame

1000x600: [WMIN/1000600FER](#)

SEE PAGE 180
FOR OUR RANGE
OF ACCESSORIES

STOCK TOP DÉCORS

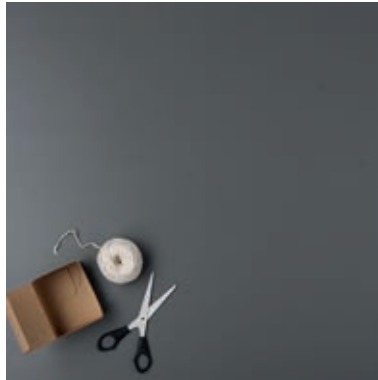
BLACK

EGGER U999



GRAPHITE

KRONOSPAN 0162



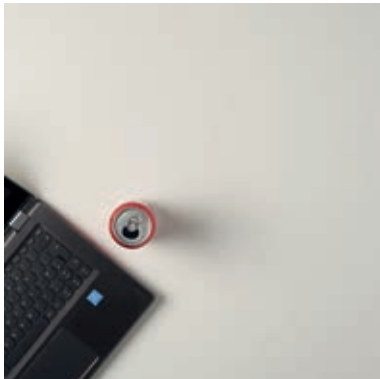
GREY

KRONOSPAN U112



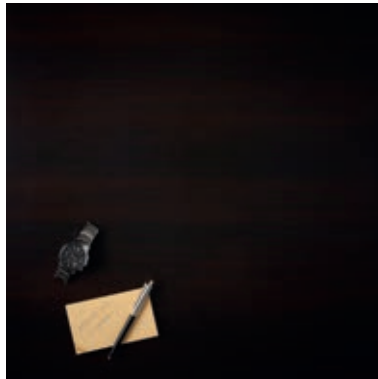
WHITE

KRONOSPAN K101



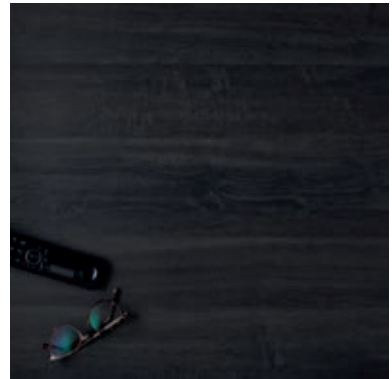
WENGE

EGGER H1137



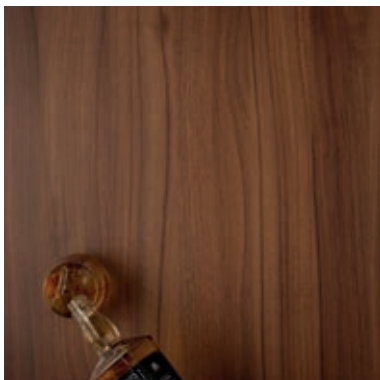
ANTHRACITE SHERMAN OAK

EGGER H1346



NATURAL DIJON WALNUT

EGGER H3734



TIMBER

EGGER H1487



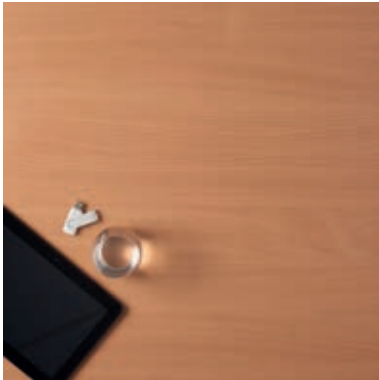
GREY NEBRASKA OAK

EGGER H3332



BEECH

KRONOSPAN D381



OAK

EGGER H1334



MAPLE

KRONOSPAN D375



CASCINA PINE

EGGER H1401



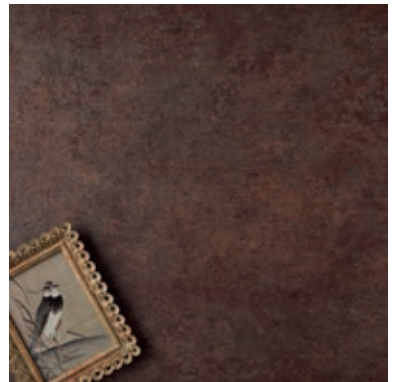
CONCRETE

EGGER F186



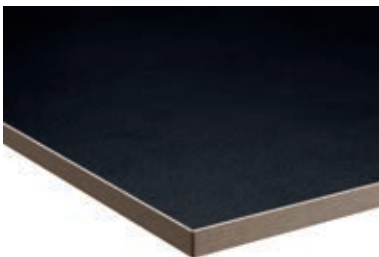
FERRO BRONZE

EGGER F302



BLACK PLY EDGE

KRONOSPAN U999



GRAPHITE PLY EDGE

KRONOSPAN 0162



WHITE PLY EDGE

KRONOSPAN K101

